

Proudly Sponsored by,



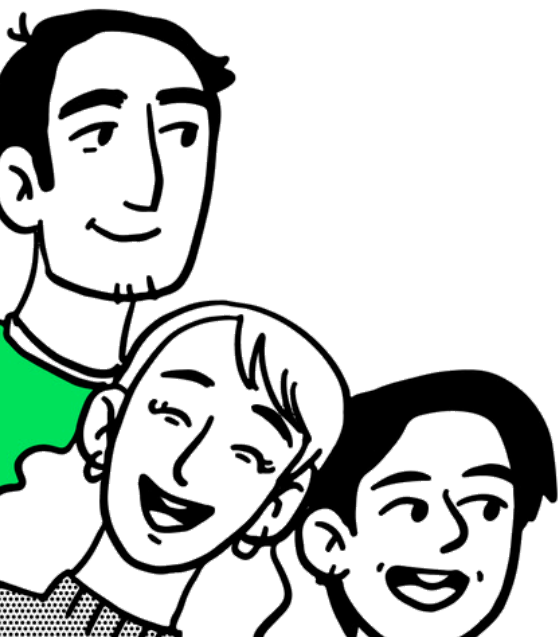
We Report Work

Try [We Report Work](#) - To improve your team's productivity instantly.

#wereportwork #teambuilding

ONBOARDING GAMES

Onboarding Bingo



What is Onboarding Bingo?

Onboarding bingo is a fun and interactive game designed to make the employee onboarding process more engaging and enjoyable.

Imagine you've just started a new job, and instead of sifting through piles of paperwork on your first day, you're handed a bingo card.

But this isn't just any bingo card; it's filled with various tasks and interactions that help you get to know your new workplace and colleagues.

Let's see how it is played.

How is Onboarding Bingo played?

Bingo Card with Tasks: Each square on the bingo card contains a different task or activity related to learning about your new job or interacting with new colleagues. These might include items like "Find someone who has worked here for more than 5 years", "Learn where the emergency exits are", or "Have lunch with a member of a different department".



Why play Onboarding Bingo?

Engaging and Educational: The tasks are designed to be both fun and informative. They encourage you to explore your new workplace, ask questions, and engage with your colleagues. This helps break the ice and reduces the anxiety of being the 'new person'.

Flexibility: You can complete the tasks at your own pace. Some might be done in a few minutes, while others might take a few days.

Rewards and Recognition: Often, there's a small reward for completing the bingo card, like a coffee voucher or a company swag item. This adds an extra layer of motivation to participate.

Team Building: Onboarding bingo also serves as a team-building activity. It encourages new employees to interact with their teammates in a light-hearted way, fostering a sense of camaraderie and belonging from the start.



□ Onboarding Bingo Cards [for print]

20 Min - onboarding bingo (best for quick play)

Has worked with a family member	Reads books for work	Can do a spot-on impression	Loves working from home	Is close to grandparents
Has more than one houseplant	Is good at time keeping	Master Organizer	Has a story about a strange coincidence	Is on first employment
Has an inexpensive hobby	Has been to the company's headquarters	Speaks another language	Commutes to work	Has a bizarre talent
Loves coffee in the morning	Prefers phone calls to messages	Has been on more than one date in one day	Has cats	Has Kids
Knows someone who won the lottery	Prefers to listen to music while working	Loves open-plan offices	Jogs regularly	Has dogs



1 Week - onboarding bingo (best for individual)

Meet with your team leader	Office Tour	Lunch with a Colleague	Attend a team meeting	Find the longest serving employee
Learn the company mission	Coffee-break with a new hire	Complete a specific training module	Discover a fun fact about company	Meet with HR
Send an intro email to company-wide	Participate in a company tradition	Find someone from a different branch	Join a work-related social group	Learn a new software or tool
Share a personal goal with team / lead	Introduce yourself in a meeting	Find a mentor	Suggest an improvement	Locate safety equipment
Join a volunteer activity	Set up your workspace	Attend a workshop or training	Share a hobby or interest	Give feedback on onboarding process



DIY - onboarding bingo (best for custom needs)



Streamline your work reporting with,
#wereportwork #ai #aiforgood



WE REPORT WORK

If you like our content, spare your 2-Min to explore how We Report Work solves issues of **“Not getting timely updates”** and **“Countless Wasted hours on Reporting”** using tech magic.



Try We Report Work's [Free Forever Plan](#).

We're always up for a coffee chat. Reach out on hello@wereport.work



We Report Work
the easiest way to report work